

Carezza Supreme UX ALL

5/32" Saxony uni

100% polyamide IMPREL®

2 draads getwijd & gethermofixeerd

RUG
Ultratex

POOLHOOGTE
± 11 mm

TOTALE HOOGTE
± 15 mm

POOLGEWICHT
± 1600 g/m²

TOTAAL GEWICHT
± 2.500 g/m²

AANTAL NOPPEN/M²
± 135.000

AANBEVOLEN LEGWIJZE
• Verkleven

GEBRUIK
• Klasse 22: Huishoudelijk
• Comfort: 5
• Brandklasse. E_{fl} EN 13501-1

5/32" Saxony uni

100% polyamide IMPREL®

retors 2 bouts & thermofixé

DOSSIER
Ultratex

HAUTEUR DU VELOURS
± 11 mm

HAUTEUR TOTALE
± 15 mm

POIDS DU VELOURS
± 1600 g/m²

POIDS TOTAL
± 2.500 g/m²

NOMBRE DE POINTS/M²
± 135.000

POSE PRÉCONISÉE
• Pose collée

UTILISATION
• Classe 22: Domestique moyen
• Confort: 5
• Classement feu E_{fl} EN 13501-1
• Résistance thermique:
ISO 8302: 0.20 m² K/W

5/32" Uni-Saxony

100% polyamide IMPREL®

2fach gezwirnt & thermofixiert

RÜCKEN
Ultratex

POLHÖHE
± 11 mm

GESAMTHÖHE
± 15 mm

POLGEWICHT
± 1600 g/m²

GESAMTGEWICHT
± 2.500 g/m²

NOPPEN/M²
± 135.000

EMPFOHLENE VERLEGEART
• Verkleben

EINSATZ
• Klasse 22: mittel
• Komfort: 5
• Baustoffkl. E_{fl} EN 13501-1
• Wdw. ISO 8302: 0.20 m² K/W

5/32" plain saxony

100% polyamide IMPREL®

two-ply heatset

BACKING
Ultratex

PILE HEIGHT
± 11 mm

TOTAL HEIGHT
± 15 mm

PILE WEIGHT
± 1600 g/m²

TOTAL WEIGHT
± 2.500 g/m²

TUFT DENSITY/M²
± 135.000

INSTALLATION METHOD
• Complete adhesion

USAGE
• Class 22: General domestic
• Comfort: 5
• Fire resist. E_{fl} EN 13501-1



Onder voorbehoud van wijzingen van de technische specificaties - Sous réserve de modifications techniques - Unter Vorbehalt von technischen Änderungen - All rights reserved to alter technical specification

012	112	140	146	150	355	533	909	910	957	965	990
LX CA. 4M											

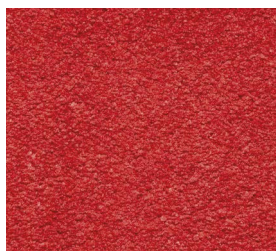


Carezza Supreme ux ALL

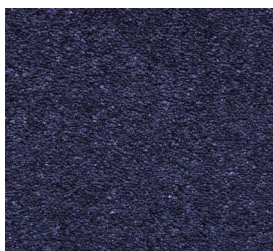


▲ 012

▲ 112



▲ 355



▲ 533



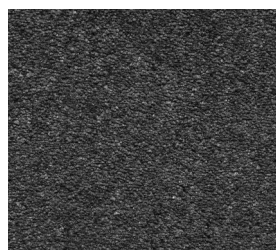
▲ 140



▲ 146



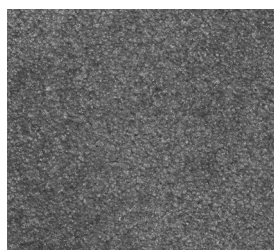
▲ 150



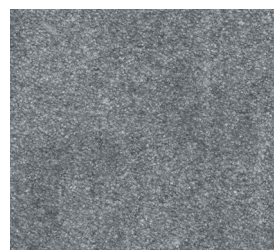
▲ 990



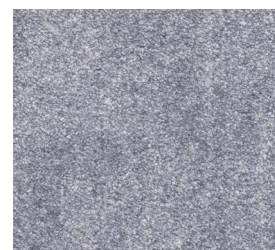
▲ 965



▲ 957



▲ 910



▲ 909